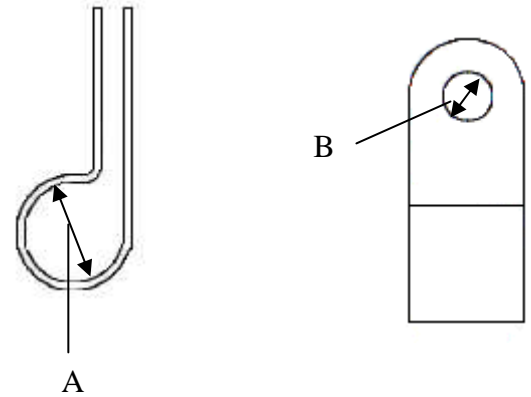


**SINGLE CLIPS & TWO WAY SADDLES (LSZH COATED)**

**LSZH Coated single Clips**

P Clip Reference RCHL	Approximate Diameters mm (Reference A)	Hole Size mm (Reference B)	Wood Screw Number
26	6.6 - 6.9	4	6
28	7.3 - 7.6	4	6
30	7.7 - 8.0	5.25	8
32	8.1 - 8.4	5.25	8
34	8.7 - 9.0	5.25	8
37	9.4 - 9.9	5.25	8
40	10.3 - 10.8	5.25	8
43	10.9 - 11.3	5.5	10
47	12.4 - 12.8	5.5	10
51	13.1 - 13.4	5.5	10
54	13.6 - 14.8	5.5	10
59	15.2 - 15.6	5.5	10
63	16.4 - 16.8	5.5	10
67	16.9 - 17.3	7.1	14
71	18.1 - 18.6	7.1	14
75	19.2 - 19.6	7.1	14
79	20.0 - 21.4	7.1	14
88	22.9 - 22.5	7.1	14
101	25.8 - 26.2	7	14



**Product data**

**Material**

Manufactured from drawn copper strip to BS1432 C101 9.52mm X 0.6mm HV 90 – 110

**Coating**

Interpon polyester powder coating in accordance with London Underground Limited engineering standard 2-01001-002 Issue A1: December 2003

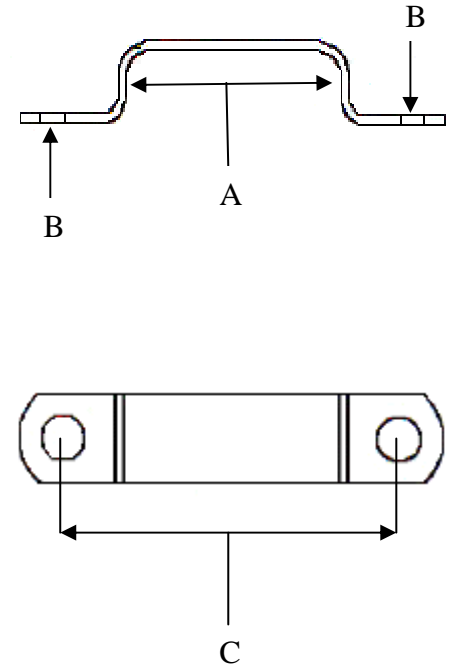
**Fire propagation test**

BS476: PART 6:1989 & SURFACE SPREAD OF FLAME TEST – BS476: PART 7 1997

**SINGLE CLIPS & TWO WAY SADDLES (LSZH COATED)**

LSZH coated saddles

Saddle Reference RSFL	Approximate Diameters of cables mm (Reference A)	Hole Size mm (Reference B)	Fixing Centre mm (Reference C)	Wood Screw Number
272	2 x 6.8 - 7.2	4.0	27.0	6
302	2 x 7.6 - 8.0	4.0	27.0	6
342	2 x 8.6 - 9.0	5.25	36.0	8
382	2 x 9.6 - 10.1	5.25	36.0	8
422	2 x 10.6 - 11.1	5.25	36.0	8
462	2 x 11.6 - 12.1	5.5	49.0	10
502	2 x 12.4 - 13.3	5.5	49.0	10
542	2 x 13.4 - 14.3	5.5	49.0	10
592	2 x 14.4 - 15.3	5.5	49.0	10
632	2 x 15.4 - 17.2	5.5	49.0	10
702	2 x 17.3 - 18.2	7.1	62.0	14
752	2 x 18.3 - 20.1	7.1	62.0	14
812	2 x 20.2 - 21.0	7.1	62.0	14
932	2 x 22.7 - 23.2	7.1	73.0	14
1042	2 x 25.6 - 26.1	7.1	73.0	14



Product data

**Material**

Manufactured from drawn copper strip to BS1432 C101 9.52mm X 0.6mm HV 90 – 110

**Coating**

Interpon polyester powder coating in accordance with London Underground Limited engineering standard 2-01001-002 issue A 1: December 2003

**Fire propagation test**

BS476: PART 6:1989 & SURFACE SPREAD OF FLAME TEST – BS476: PART 7 1997

## CLIPS & SADDLES WITH AN LSZH MATERIAL

### Introduction

Introduced to satisfy the reduction of Smoke and Toxic fume emissions. Also the Fire Testing in accordance with London Underground Limited. Engineering Standard EI042 : A2 : October 1996 Stations (ST/SU/V&P) and Tunnels (TU/SU/V&P)

### Material Specification

Fixing Clip/Saddle:	Copper
Coating:	TGIC Free Polyester Powder Coating
Material Properties:	Halogen Free Low Smoke and Fume Fire Resistant
Max. Working Temperature:	200°c
Material Characteristics:	Excellent Resistance to Corrosion Improved Resistance to Wear And Abrasion Good Impact Resistance Flexibility Compatibility with Food Products Good Hygienic Properties Long Service Life

Conforms to British Standards when Applied:

Certified to BS 6853: 1987: B5.2	<b>London Underground Limited</b> Smoke and Toxic Fume Emissions	
Certified to BS 476; 1989: Part 6	<b>Warrington Fire Research</b> Fire Propagation Test	Class '0'
Certified to BS 476: 1997: Part 7	<b>Warrington Fire Research</b> Surface Spread of Flame Test	Class '1'